



Credit: Jolene Osztian, Photographer

TIME FOR HALLOWEEN SHENAGIGANS!

***HOPE YOU HAVE AS MUCH FUN TODAY
AS THE SPIDERS AND BATS LIVING IN YOUR HOUSE.***

**READ WHAT BU PRESIDENT
HAS TO SAY ABOUT HIS
PLANS FOR OUR SCHOOL!**

page 2

*We had a chance to sit down and
chat with Dr. Docherty, and hear
what he has to say.*

**SUPERNATURAL: THE
ROAD SO FAR...**

page 4

*15 years of a show that hunts anything
spooky and horrifying is ending soon.*

VOLUNTEER OPPUTUNITY

page 6

*The Halloween food drive is coming
up soon!*

**Editor-in-Chief**

Kai Kayla Neiman
eic.thequill@gmail.com

Assistant Editor-in-Chief

Lulu Maria de Lourdes Garcia
Manzano

General Manager

Elinor Murray
gm@thequill.ca

Web Content Coordinator

Emmanuel Madu

Social Media Coordinator

Kai Kayla Neiman

Senior Advisor

Donnovan Hillman

Copy Editor

Katelyn Jones

Advertising

advertising@thequill.ca

Contributors

Tyler Clarke, Anthony Labonte, Noah Monk, Aiden Trembath, Guolixuan Mao

The Quill is published weekly by The Quill, Inc., and is printed by The Killarney Guide in Killarney, MB.

NOTE: Editorials, letters, and viewpoint articles do not necessarily reflect the opinion of The Quill staff, The Quill, Inc., or the faculty, staff, or administration of Brandon University.

The Quill is a member of Canadian University Press (CUP), one of the world's largest student organizations, with a membership of over 70 student newspapers in Canada.

Advertisers wishing to buy space in both this newspaper and other CUP-affiliated newspapers should contact our multi-market ad representative:

FREE Media

11629 105th Avenue
Edmonton, AB T5H 0L9
Phone: 780-421-1000
advertising@free-media.ca

For online advertising inquiries, please contact:

Rouge Media Group
250 The Esplanade, The Keep
Toronto, ON M5A 1J2
Phone: 416-360-8120

Local advertisers can also contact

us directly:

The Quill
270 18th Street
Brandon University
Brandon, MB R7A 6A9
Office: 204-727-9667
Fax: 204-571-0029

Interview with Dr. David Docherty.

Lulu Maria de Lourdes Garcia Manzano, Assistant Editor-in-Chief

On Tuesday October 22, 2019, The Quill had the opportunity to sit down and meet with BU's new president. Our interview took place at Forbidden and during this time I was able to listen to him talk about his time in Mount Royal as its university president, and what future he saw from BU.

Our interview began with the basics, I asked him what his first impression of BU were and his answer was "Clark Hall" He then further explained that the one thing he had noticed was the structure of Clark Hall and how it towered with it's early 1900s's structure. He said that at Mount Royal there was no building like Clark Hall. Brandon University is a mixture of old and new buildings and its charm seemed to impress our new president. Next, I asked him what he believed BU's strengths were, he said that he believed the size of our university was its main strength. He said that as a smaller university more connections are built, and more people know each other. He also said that as a smaller university in a smaller city he felt as though he had lost the anonymity he possessed back in Calgary. He further explained that in a smaller city where more of its population attended the university, many in the street would recognize him as that university's president.

My next question for Dr. Docherty was what he believed needed improvement. He said that the one thing he wanted to start improving was Brodie Building. No further details were given about his plans regarding Brodie Building simply that it was on the top of his list to improve. Following this question, I asked him what he hoped to accomplish during his presidential term. His answer came quickly. While there were a lot of things, he hoped to accomplish the main one was having the first award scholar or professor from BU. He said he believed students and professors alike had

the potential and talent to win a national award. He said that he hoped to implement coaching workshops where students could be guided through the application and interviewing process of applying for an award.

I asked him how his past administrative experience at Mount Royal was and how it would help him with administering BU. This question also led to an answer for another question about the reduction in the operating grant from the province that BU will have to face. This question also led to an answer for another question I had for him pertaining the reduction in the operating grant from the province that BU will have to face. For his administration time at Mount Royal he said that it had been his first time as a president and that of course there were ups and downs but that he was proud of what the school had accomplished. He said that during his presidency he put greater focus on students obtaining a bachelor's degree. By the end of his term more students were choosing a four-year degree rather than a two-year degree. Now as his presidency begins at BU, he has experience in dealing with any ups and downs that a university may face. Relating to the budget cut that BU will face, he said that during his time in Mount Royal budget cuts were made, and he got through them. He went on to say that while nobody liked budget cuts, they were still going to be made and all you could do was get through them.

When asked about his commitment to diversity, transparency, personal accessibility and community building and how it will influence his administration of BU he said that BU already possessed many of the aspects he was committed to. He said that there were gender neutral washrooms across campus and that he was happy to see all the personal accessibility implementations at BU. He went on to discuss how his commitment to those ideals were implemented

at Mount Royal University and said that one of the first things he had done had been to make sure the administration was made up more than just men. Equality and diversifying with the higher ups is a big priority for him. He also said that he made sure the administration had diversity regarding each member's sexual orientation. He said that diversity created more opinions and thus more problems could be solved.

As our interview came to an end, I could not help but ask why his hiring process had seemed to drag. He said that while he was very excited to begin his presidency at BU, he had promised his daughter she would be able to graduate high school in Calgary. He believes that family is very important and that promises made must be kept. Therefore, he began his presidency in May and because of this, we had interim president Dr. Steve Robinson up until April.

Brandon University will be lucky to have Dr. David Docherty as its president for the next few years and Brandon University welcomes him with open arms. He is incredibly accessible, and he encourages students to feel comfortable talking to him as he believes that being the president of a university, an essential part of his role is to get to know his students better.



Photo Credit: brandonu.ca



Credit: Jolene Osztian, Photographer

The Haunting of Hill Side House

N. Monk, an extreme philosopher

“The House Isn’t Real. You’re Dead”

That was my first thought when I was reading Shirley Jackson’s *The Haunting of The Hill House*. From the beginning, signs that the main character Eleanor or Nelly was passing from reality to the afterlife/reincarnation kept popping up. Almost weed-like connections to another book, humanity’s forbidden book.

That book is the Tibetan Book of the Dead. For simplicity, only certain parts of the book will be used to explain the house. The actual name of the book *Bardo Thodol* can be translated as “in-between state and awakening”. The most relevant idea from the book of the dead is what happens to the person after death. At first, the person is considered in the in-between world, and in this stage as we’ll call it is where the

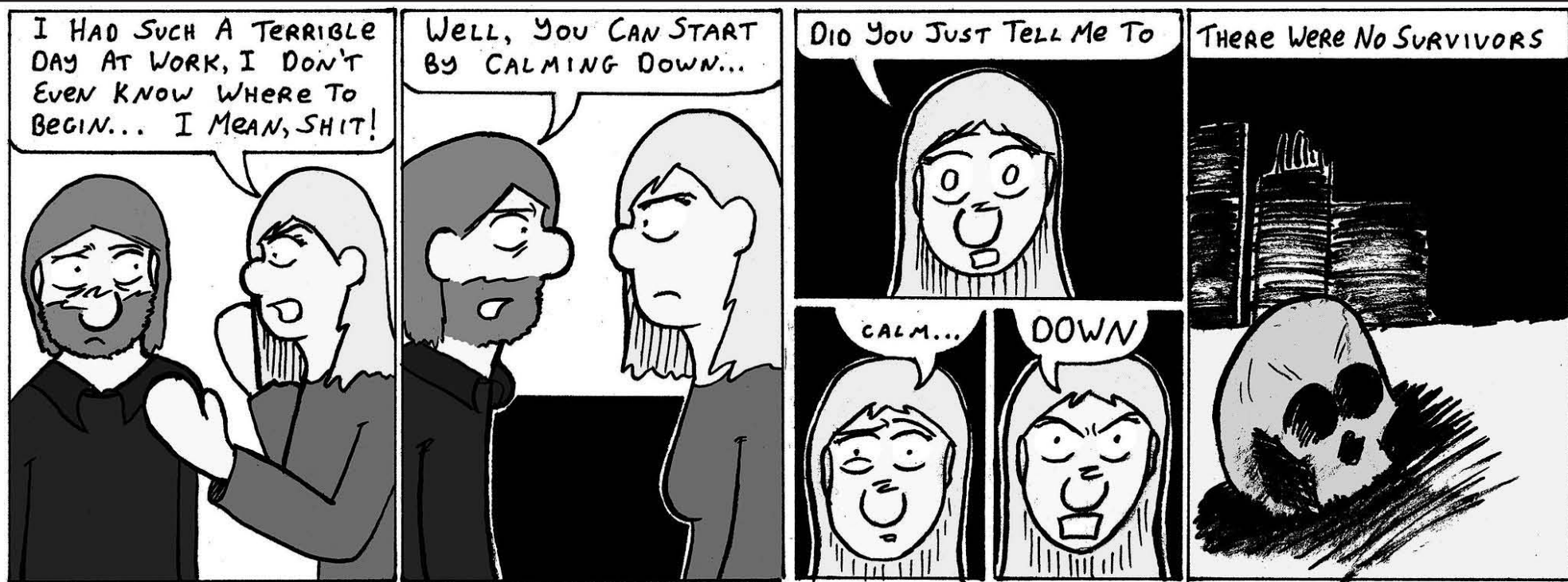
person is dead by do not know that they are dead. It is also where the Buddhist deities manifest, and because most people are unfamiliar with them, I will refer to Carl Jung’s archetypes instead. In the third stage and final stage, the person starts to see karmic illusions and things start to take a dark turn, in which awakening is usually reached.

On the way to the house, Eleanor sees relative to herself perfect houses she could settle down and live in. This is the point in the story when Eleanor is going to the in-between place or a terminal to the afterlife. That in-between place, in this case, is the hillside house itself. When she arrives, she is the first of all the guests to arrive. It’s possible that Mrs. Dudley can be thought of as part of the house itself, in the sense she is a clock. Notice how she never says anything more. Nor is she

ever seen actually leaving the house or arriving. In the second stage, all of the objects are things from her past life. Eleanor was at the house far long ago in her childhood, so even the house is from her past life. The other guests arriving is the manifestation of the deities or the archetypes. The doctor is Jung’s archetype of the wise old man. Notice how only the doctor seems to know about the house and its past, and that he serves as a guide to the other in the story? Luke is the archetype of the animus, the masculine part of Eleanor’s psyche. Theodora is perhaps the easiest to see, Theodora is Eleanor’s shadow or the archetype of the shadow.

When Eleanor starts transitioning to the final stage is when the house or in-between starts to do its spooky acts and illusions. When she starts seeing her karmic illusions is when the house fully turns

“haunted” and this is also when the other guests in some sense turn against Eleanor and start to reject her “childish” acts and behaviour. It is easy to see when the final stage begins because everyone starts referring to Eleanor as Nelly, as does the house itself. Depending on how a person deals with these karmic illusions will influence what kind of life they will be reincarnated as. Because Nelly fails to let go, in other words, does not come to acceptance with impermanence, she ends up leaving the in-between in a horrible manner. She ends up crashing into a tree, after not allowing herself to let go of the house. However, then the question remains, when in the beginning of the book did, she actually die?



Artist: Tyler Clarke



Artist: Anthony Labonte



Artist: Guolixuan Mao

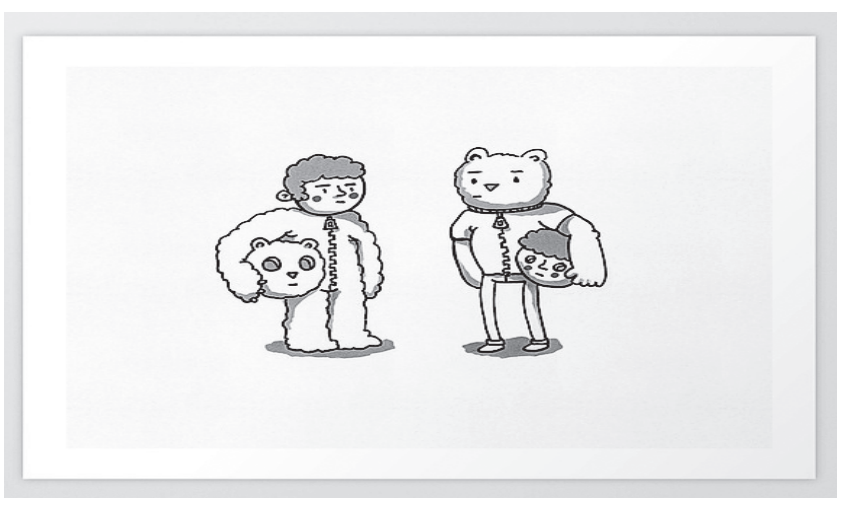
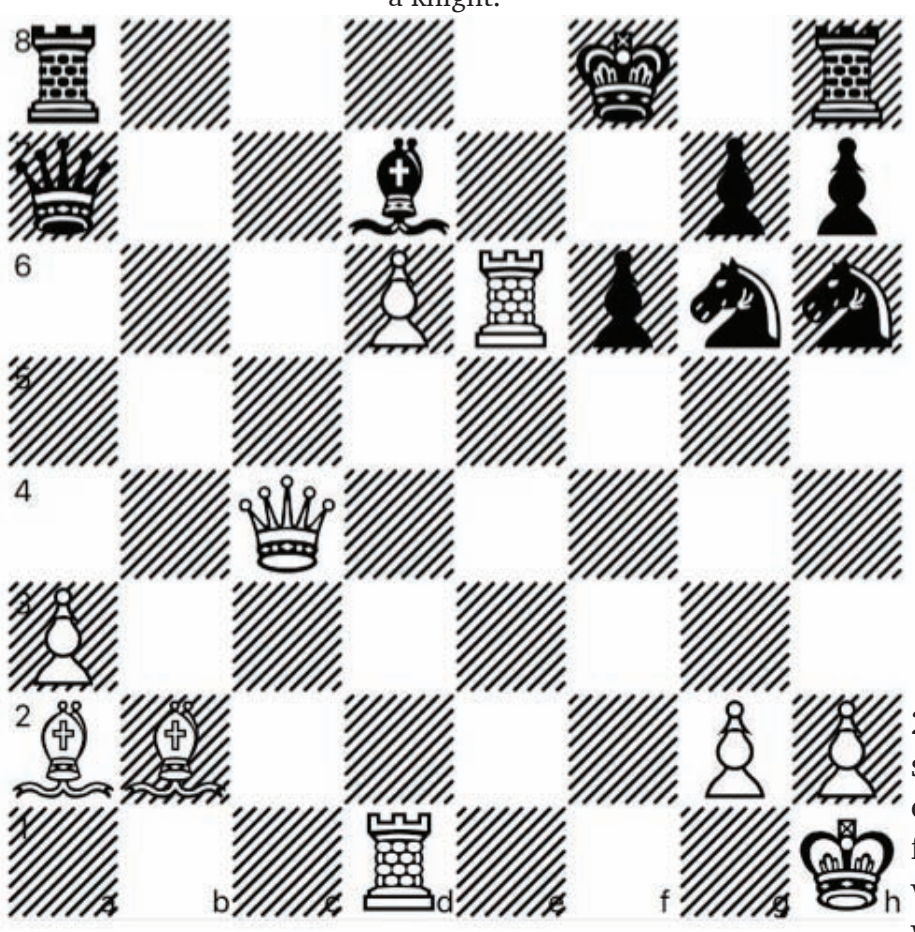
@watery_art

WHITE TO PLAY

From
Torrecillas V. Kaiser
(2003)

Four Knights Defense, Halloween Gambit

“Yes, the Halloween gambit is a real opening and yes you do sacrifice a knight.”



Credit: Creative Commons

15 Years of Supernatural Coming to an End

Kai Neiman, Editor-in-Chief

The road so far...

The show Supernatural first aired on September 13th, 2005. During its first season, the show received generally mixed critical reception, but reception from critics has grown more favorable as the series progressed with subsequent seasons receiving generally positive reviews from critics. The series originally focuses primarily on the brothers Dean Winchester and Sam Winchester, played by Jensen Ackles and Jared Padalecki, as they travel throughout the country hunting down evil supernatural creatures.

Over the years the series has evolved from hunting down urban legends on the road, to fighting the apocalypse with demons and angels. The Angels storyline added in Castiel, a seraph who eventually becomes the best friend of the Winchester brothers. Originally a short-term role which became a series regular later on. Castiel is played by Misha Collins. He was promoted to a series regular for the fifth and sixth season, something Collins believes to be mainly due to fan support. Collins was downgraded to recurring status for the seventh and eighth seasons, but returned to series regular status for seasons nine and ten.



Halloween Cryptogram

xa oehjp ej pdwp okhepqza sdeyd eo
jpk hkjahejaoo bkn pdaj pda olenepo kb
pda zawz sdk opkkz ej heba xabkna pdaa

Soulution availble in next printed Issue.

Almost a year later, Season 5 introduces the demon Crowley, played by Mark Sheppard, who would become the Winchester’s longest-recurring antagonist and occasional anti-hero in the series. Crowley would alternate between the villain and an ally to the Winchesters. His mother Rowena is also introduced in Season 10, play by Ruth Connell and she experiences the same character development as villain and ally as Crowley does. Eventually, Crowley sacrificed himself fighting against Lucifer at the end of Season 12.

Season 12 also reintroduces Mary Winchester, the mother of Dean and Sam. She is played by Samantha Smith in all but two episodes. She is brought

back to life by the villain, turned neutral ally of season 11, Amara. Mary struggles to adapt to the world that has changed greatly from what she once knew and the changes in her sons.

Jack Kline introduced at the end of season 12 is played by Alexander Calvert. He is a Nephilim and the son of Lucifer. Jack was taken in by Sam Winchester and Dean Winchester who would teach him how to master his powers. He eventually kills Michael, an alternate world archangel. Jack begins to damage his soul as he uses his powers after a confrontation with Lucifer, which results in him killing Mary by accident. His attempt to bring Mary back to life only restores her body, and when Castiel goes to Heaven to retrieve

her soul, he learns that she has been reunited with John Winchester in Heaven, prompting Castiel to let Mary stay dead so she can be with him.

The end of season 14 begins an intense arch to end the series. Mary has been killed, God shows up once more and when the Winchesters don’t do as he wants, Jack is smote by God. A number of villains and the monster of the week from times past are resurrected.

Dean, Sam, Castiel and Rowena are fighting to keep the world in one piece as season 15 begins. It’s sure to be an interesting fight as the series comes to on end.



Credit: Jolene Osztian, Photographer

HALLOWEEN AT BU

Kai Neiman, Editor-in-Chief

The Brandon University Community in Action committee is hosting a campus Halloween Coffee Break to celebrate our campus United Way campaign. Join us at 10 a.m. in the Down Under. There will be prizes for staff and faculty costumes, as well as a prize draw for United Way pledges. Please bring a non-perishable food item to support the BUSU Food Bank.

Harvest Hall invites all families of ghouls and ghosts for a pre-trick-or-treat buffet starting

at 4 p.m. The buffet is \$12.95 and all kids under 7 eat free, with kids 8–15 half price. Price include meal, drink and dessert. The menu includes roasted leg of hangman, graveyard mac'n'cheese, ghoulish grilled cheese, bat wings and more...

While handing out candy to the kiddies, please watch for student union representatives collecting non-perishable food items for the BUSU and ACCSA food banks.

UPCOMING HALLOWEEN FOOD DRIVE

Kai Neiman, Editor-in-Chief

On Halloween night, students from BU and ACC have the chance to volunteer for the university's food bank. It's a great alternative to trick or treating. Wearing a costume is optional but fun.

The event allows students to do something fun and safe on Halloween. It's a wonderful way for the university

to get canned good to be used over a longer period of time than perishable foods.

Contact BUSU if this is something that interests you. If you are unable to go to the BUSU office, you can phone 204-727-9660 and a BUSU representative will help you sign up over the

phone. In regards to the event, all volunteers are expected to meet at Samartan House on October 31st at 5:00 pm. The event will run from 5:00-9:00pm.

There is still time to take part if you so wish.

DEATH CAFÉ

Kai Neiman, Editor-in-Chief

Ready to talk about death? Few people are. Brandon University is hosting a Death Café next week to help people get comfortable in discussing death and mortality.

While death is a mysterious and often taboo subject in western society, people have questions, thoughts, and feelings about dying and death that they may be reluctant to express.

“A death café is an open forum discussion about death and dying and the thoughts, feelings, and questions we all have but may be reluctant to voice

out loud,” said Sharran Mullins, an Assistant Professor in Psychiatric Nursing at BU. She and her third-year palliative care students are facilitating the death café. “I believe that having an opportunity like this will help our students (and us!) develop greater comfort in discussing death and dying, and will foster greater ‘death literacy’ in our community.”

A death café is not grief, individual, or group counselling, she notes. People should come prepared to share their thoughts and contribute to what is sure to be a lively and enlight-

ening discussion.

A death café provides a safe environment in which to talk about death. The death café movement began in 2011 based on the work of Swiss sociologist and anthropologist Bernard Crettaz. Since their invention, death cafés spread quickly across Europe, North America, and Australasia.

“At a death cafe, people gather to eat cake, drink tea/coffee — Let death be not decaffeinated! — and discuss death. The objective is to increase awareness of death with a view

to helping people make the most of their (finite) lives. It is an open-forum group discussion of dying and death, with no agenda. It is a discussion group rather than grief support or counselling, and is not a substitute for these services.

As part of the course “Introduction to Palliative Care”, third-year Psychiatric Nursing students are hosting a death café on Oct. 30 from 7–8:30 p.m. at Brandon University in the Faculty of Health Studies room 043. All are welcome!

Witches and Wicca

Hailey Davidson, Reporter

Are witches real? Well, have you ever had déjà-vu? Consider that your intuition. Have you ever been stressed about your midterms, so you filled your bathtub with sweet smelling oils and soothing salt scrubs, maybe you lit a few candles? Sounds like a self-love spell to me. You wished you didn't have to go to class, then it was cancelled? Manifested. Have you ever just – cleaned your room – because clutter gives you heavy negative energy? Look at you, performing whole cleansing rituals like a pro.

So, are witches real? Not the kind with green skin and an appetite for babies, but yes. They're people who practice magick, directing and raising energies to serve a purpose. And if you haven't noticed lately, witchcraft is having a moment. A whole magical moment. So let's take you through the basics:

A witch is someone aware of their own power, and puts that power into action. That's it. No consumption of children's souls required.

Historically, an increased interest in witchcraft is synonymous with current society. The rise of witches is always rising parallel with another political or social movement. Because witchcraft is so easily malleable, you can make it whatever you want it to be. The witch trials were less a witch issue, and more so a response to a threatened patriarchy. Similar feminist ideologies were being brought to the forefront in the 1970s, along with a revival of modern witchcraft. In our current society, we've

seen a steady rise in Feminism in the popular and political culture. Witchcraft urges you to practice positive self-love, and to “the witch is a woman fully in her power” translates perfectly to activists today. Of course, witchcraft doesn't have a binary rule over it, and boys are witches too. Witches are inarguably having a large moment in the present, providing control, confidence, and accountability.

There are so many common misconceptions about witches - and no - the E-girl in your gender studies class isn't a witch. Okay, maybe she is. But the point is that witches don't have a specific look. There are witches of all expressions and identities. Confusion corner is where Wicca rolls on in. Here's a super simple graph to help:

WITCHCRAFT ≠ WICCA

Wicca is a religion associated with witchcraft. So, all Wiccans are witches, but not all witches are Wiccan. Kapiche? Witchcraft itself is a spirituality, a philosophy of life. There are wiccan witches, but there are also witches who practice Christianity, paganism, or atheism. When we think of witches, we usually imagine those creepy old gals from Macbeth, Hermonie Granger, or Angelina Jolie's cheekbones in Maleficent. In reality, witchcraft really isn't as cookie cutter friendly, as popular culture tropes would have you think. This is an overwhelmingly vast practice, with so many different types. There's no specific

look for a witch, and that makes witchcraft and each person's personal practice, 100% their own. To name a couple types of crafts in the cauldron, kitchen witches use magic in cooking and baking, green witches use flowers, herbs, and other plants, cosmic witches employ astrology and planetary cycles. There are some crafts that also relate directly to indigenous shamanism or African hoodoo. Who knew?

The most important step is to let go of fear. When we lack understanding for something, we tend to develop fear. For years, I had been mixing my own tea blends, collecting crystals, and taking bubble baths. The only change I've made is releasing the fear of people's judgment and recognizing the magic in these activities. Witchcraft is all about intention. If you have a purpose for drinking a cup of tea (i.e. to relax), then congratulations – you've got a spell! Some people will absolutely drain others for the fun of having their tarot cards read but become uncomfortable the moment someone says “witch”. But as it happens, the more I hear someone say “witch” the more people seem to lift their heads to say “me too”.



Credit: Creative Commons

PARK AVE.

2506
SOUTHERN
AVE.

25TH
ANNIVERSARY

REGENT CUSTOM
R CRESTING

& FRAMING

PHONE: 204-571-5400
E-MAIL: INFO@REGENTCC.CA
WEBSITE: WWW.REGENTCC.CA

Upcoming Annual General Meeting for The Quill.

It will take place November 2019 in the Mingling Area at The University.

QUILL CLASSIFIEDS

SOLUTION TO PUZZLE IN ISSUE 08

1	8	5	7	4	9	2	3	6
7	9	4	2	6	3	8	5	1
3	6	2	8	1	5	7	4	9
9	4	7	1	3	8	5	6	2
5	2	1	9	7	6	3	8	4
8	3	6	5	2	4	1	9	7
6	1	3	4	5	2	9	7	8
2	5	8	6	9	7	4	1	3
4	7	9	3	8	1	6	2	5

Issue 09 Disclaimer

This weeks issue offers some Halloween themed news as well as regular broadcasted... typed news.

Answer for Chess Puzzle from Issue 07:

For this game, my overall accuracy was 97% which is around 2700+ elo. In other words, the performance of a super-grandmaster.

16...Nb3! 17. Qe1 Nxc1 the knight on c1 must be captured here (if 18. cxb6 Nxe2+and white will have no compensation.) after 18. Bxc1 Nd5 black has secured a long-term advantage, by having the two rooks and giving White a terrible pawn structure, which becomes more apparent in the endgame.

We want you!

If you like to write, take pictures, or draw things, you should work for The Quill! We can offer a cool office to nap in and tuition rebates.

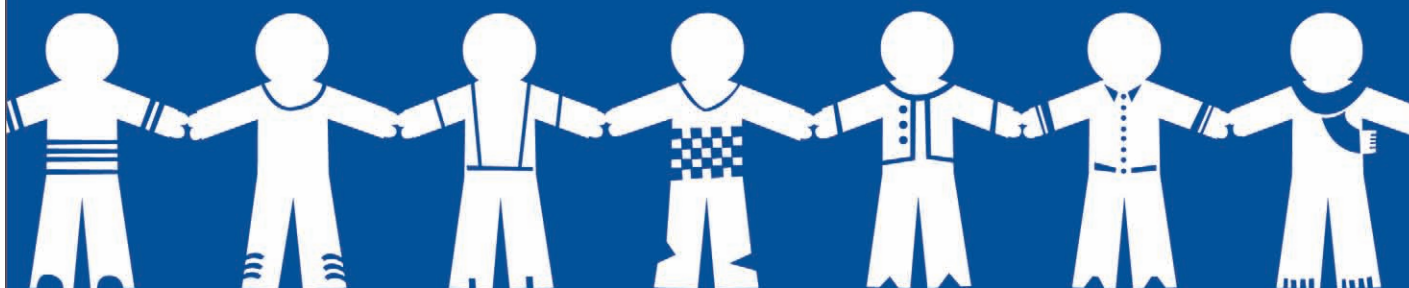
Email us at eic.thequill@gmail.com

HERE, YOU WON'T JUST MAKE CONNECTIONS. YOU'LL BUILD RELATIONSHIPS

Looking to be part of a dynamic, professional and approachable team? BDO is all about building long-term relationships and we're continually fostering new ones. After all, our entire reputation is built on our people.

Visit BDO.ca/careers for more details.

BDO. MORE THAN YOU THINK.



Assurance | Accounting | Tax | Advisory
www.bdo.ca

BDO Canada LLP, a Canadian limited liability partnership, is a member of BDO International Limited, a UK company limited by guarantee, and forms part of the international BDO network of independent member firms. BDO is the brand name for the BDO network and for each of the BDO Member Firms.

